

TN  
24  
C3  
A3  
no. 146  
plates 1-2

AL  
ES  
Y



THE LIBRARY  
OF  
THE UNIVERSITY  
OF CALIFORNIA  
DAVIS

THIS BOOK IS DUE ON THE LAST DATE  
STAMPED BELOW

RENEWED BOOKS ARE SUBJECT TO IMMEDIATE  
RECALL

NOV 14 1968

NOV 23 REC'D

REFILED PSL

SFP 5 1969

REFILED PSL

FEB 28 1991

LIBRARY, UNIVERSITY OF CALIFORNIA, DAVIS

Book Slip-50m-8,'63 (D9954s4)458

COLLATE

Call Number:

326846

California. Division  
of Mines.

TN24  
C3  
A3

California

PHYSICAL  
SCIENCES  
LIBRARY

TN24  
C3  
A3  
no. 146  
plates 1-2

UNIVERSITY OF CALIFORNIA, DAVIS

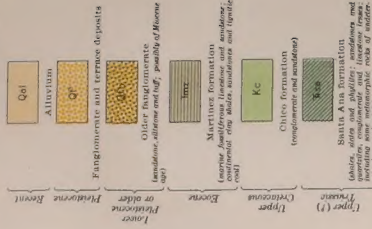


3 1175 02235 5468

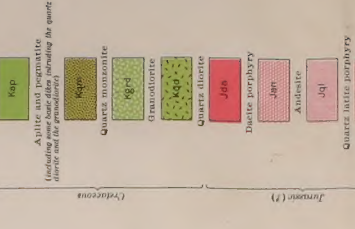
LIBRARY  
UNIVERSITY OF CALIFORNIA  
DAVIS

326846

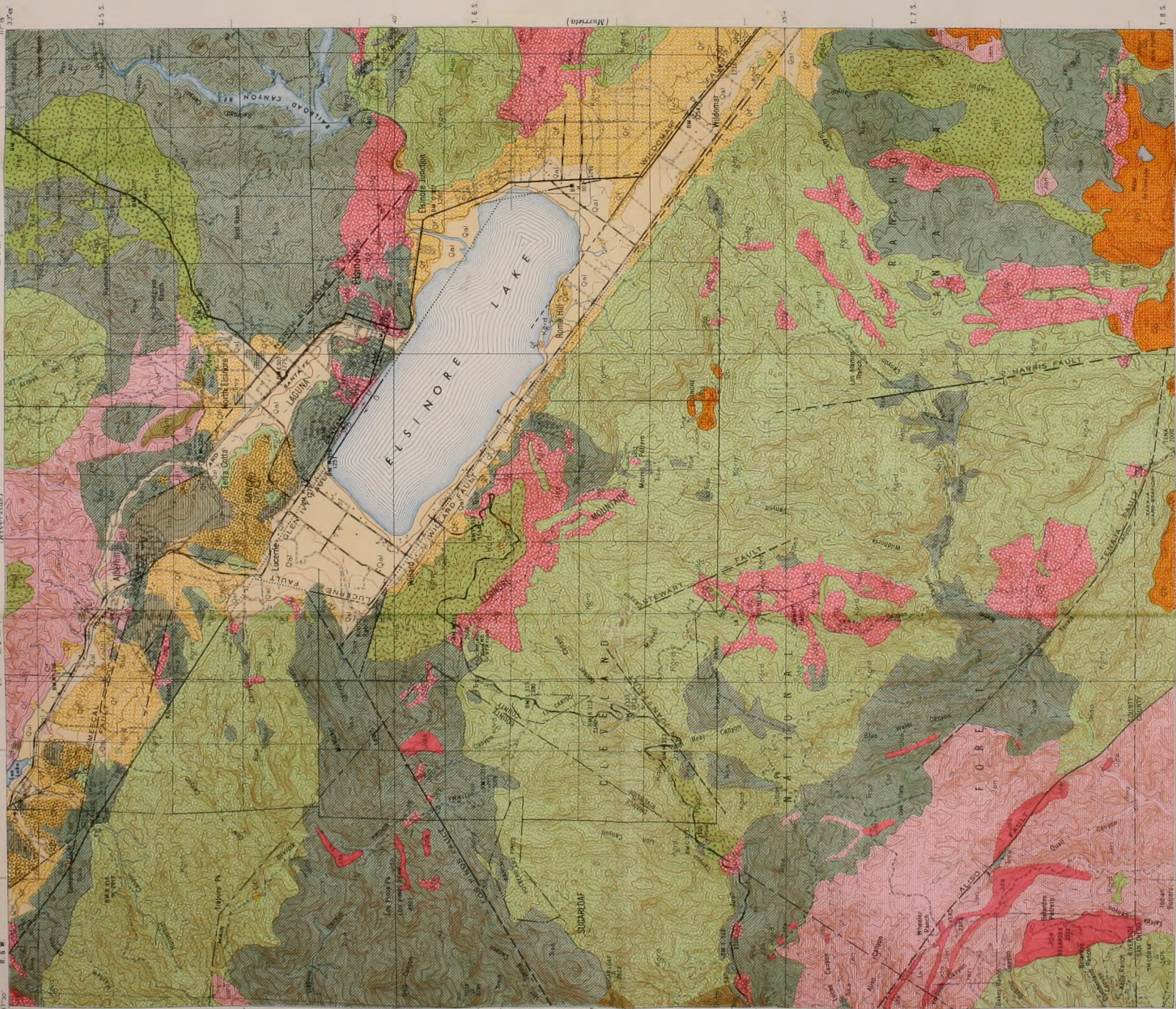
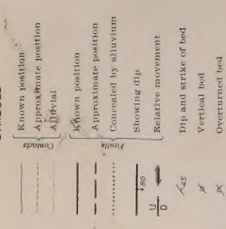
**LEGEND**  
SEDIMENTARY AND METAMORPHIC ROCKS



**IGNEOUS ROCKS**

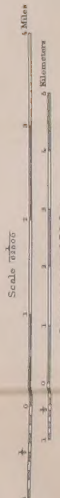


**SYMBOLS**

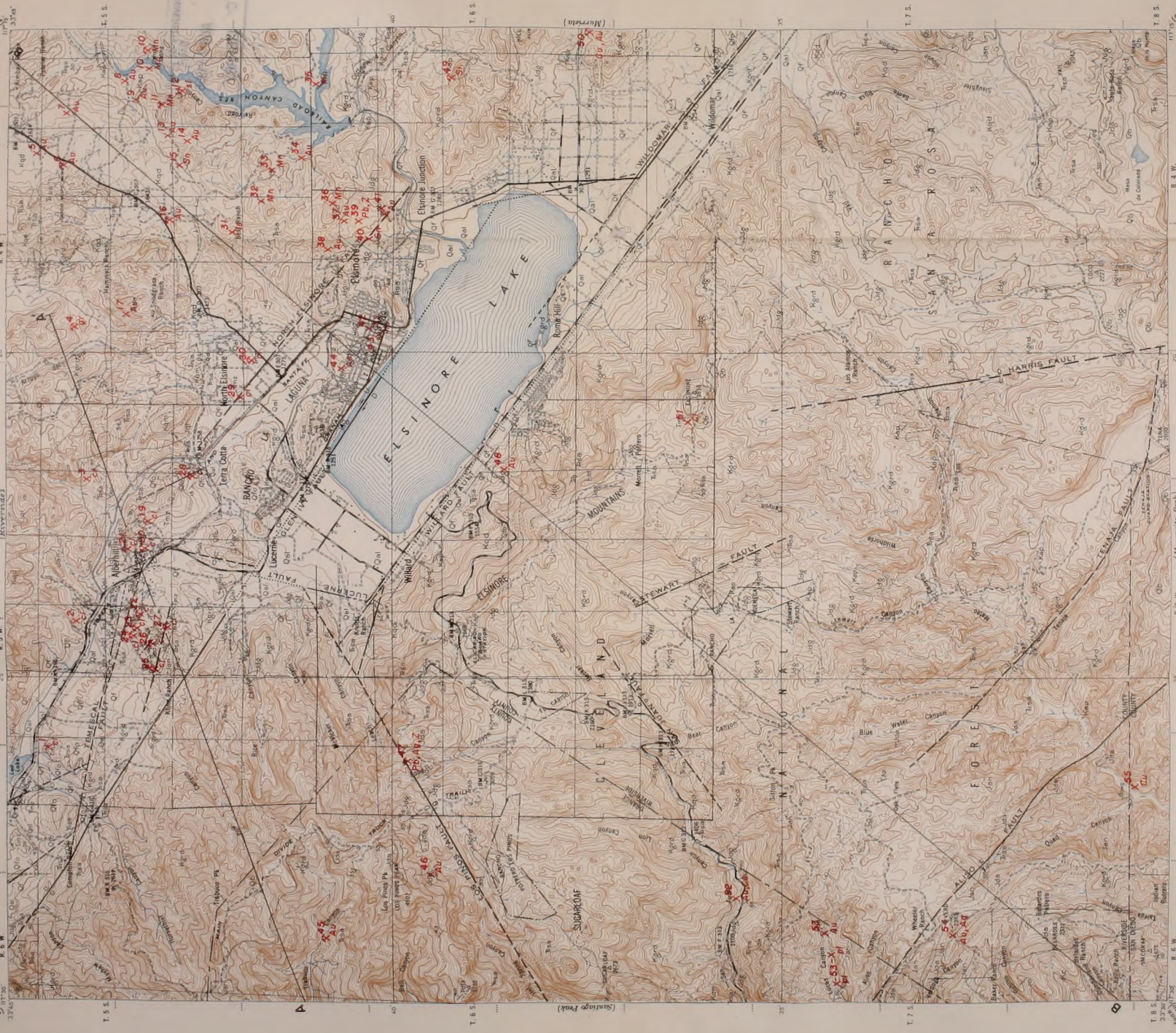


Geology surveyed in 1947

**GEOLOGIC MAP OF THE  
LAKE ELSINORE QUADRANGLE**  
By René Engel



Contour interval 50 feet  
Elevation in feet and meters



**LEGEND**  
**SEDIMENTARY AND METAMORPHIC ROCKS**

- |     |                                 |
|-----|---------------------------------|
| Qel | Quaternary alluvium             |
| Qf  | Quaternary fan deposits         |
| Qfo | Quaternary flood plain deposits |
| Trz | Tertiary zone                   |
| Kc  | Kearney formation               |
| Tob | Tertiary basalt                 |
| St  | Santa Ana formation             |
- Other abbreviations: (See separate sheets of Bulletin 146, Plate 1, for symbols and abbreviations.)
- Metamorphic formation includes: (See separate sheets of Bulletin 146, Plate 1, for symbols and abbreviations.)
- Other abbreviations: (See separate sheets of Bulletin 146, Plate 1, for symbols and abbreviations.)

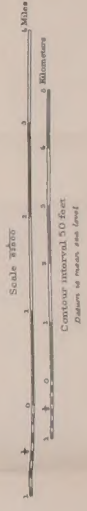
**IGNEOUS ROCKS**

- |     |                   |
|-----|-------------------|
| Qb  | Quartz monzonite  |
| Bs  | Basalt            |
| gp  | Gabbro            |
| Qm  | Quartz monzonite  |
| Qgd | Granodiorite      |
| Qgd | Granodiorite      |
| Qd  | Quartz diorite    |
| Jds | Jurassic diorite  |
| Jan | Jurassic andesite |
| Jan | Jurassic andesite |
| Jdi | Jurassic diorite  |
| Jdg | Jurassic gabbro   |
- Other abbreviations: (See separate sheets of Bulletin 146, Plate 1, for symbols and abbreviations.)

**SYMBOLS**

- |                |                      |             |                   |                              |
|----------------|----------------------|-------------|-------------------|------------------------------|
| Known position | Approximate position | Showing dip | Relative movement | Prospect and mineral deposit |
| Known position | Approximate position | Showing dip | Relative movement | Prospect and mineral deposit |
| Known position | Approximate position | Showing dip | Relative movement | Prospect and mineral deposit |
| Known position | Approximate position | Showing dip | Relative movement | Prospect and mineral deposit |
| Known position | Approximate position | Showing dip | Relative movement | Prospect and mineral deposit |
- Abbreviations: Aa—andesite, Au—gold, C—clay, Co—copper, G—granite, M—marble, P—plaster, R—rock, S—stone, Sh—shale, Ss—sandstone, Z—zinc

**ECONOMIC MAP OF THE  
LAKE ELSINORE QUADRANGLE**  
By René Engle



Copyright 1917 by U.S. Geological Survey and U.S. Army Corps of Engineers.



FR  
S  
C